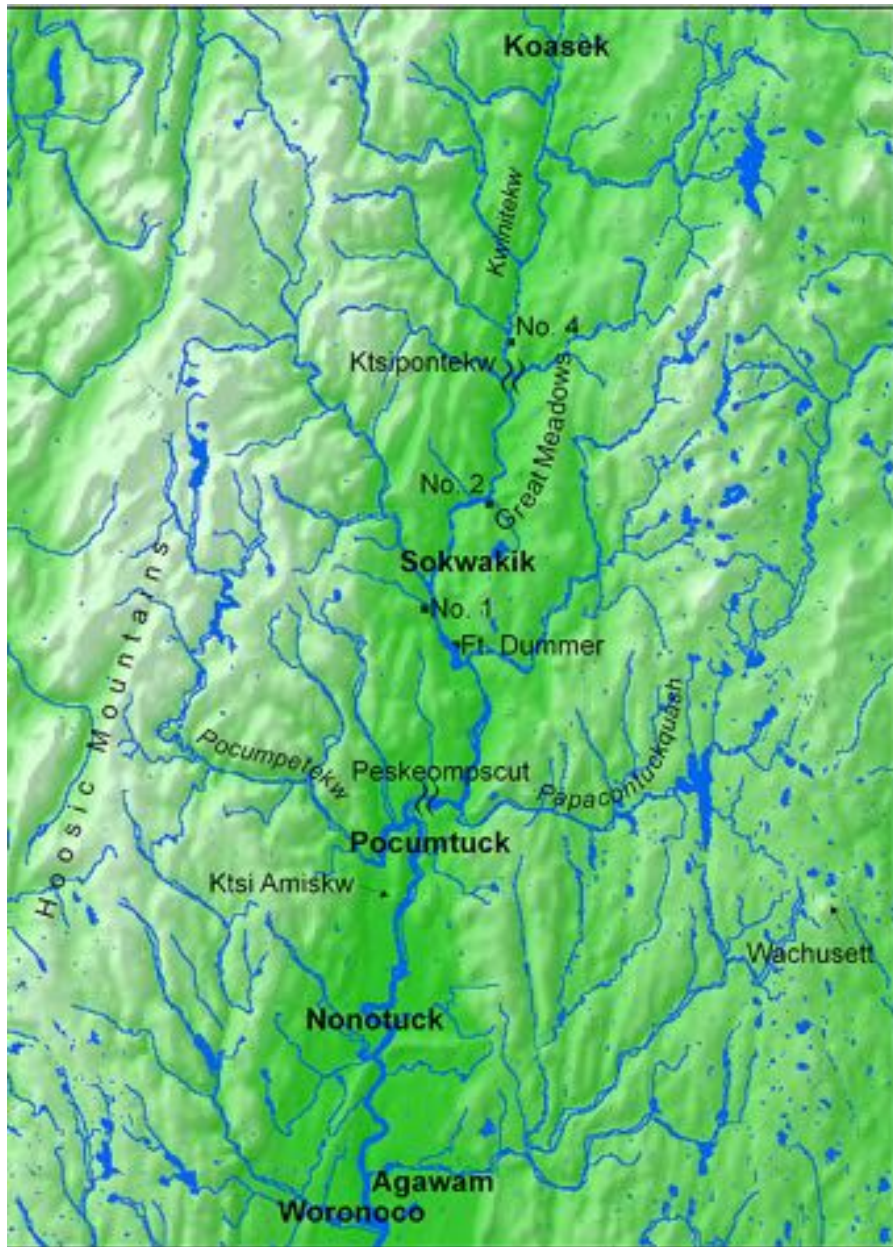


Collaboration in Action: Tribes and the NECSC

Northeast Climate Science Center's
Regional Science Meeting
May 16, 2017
Kwinetew Valley
University of Massachusetts – Amherst
Amherst, MA



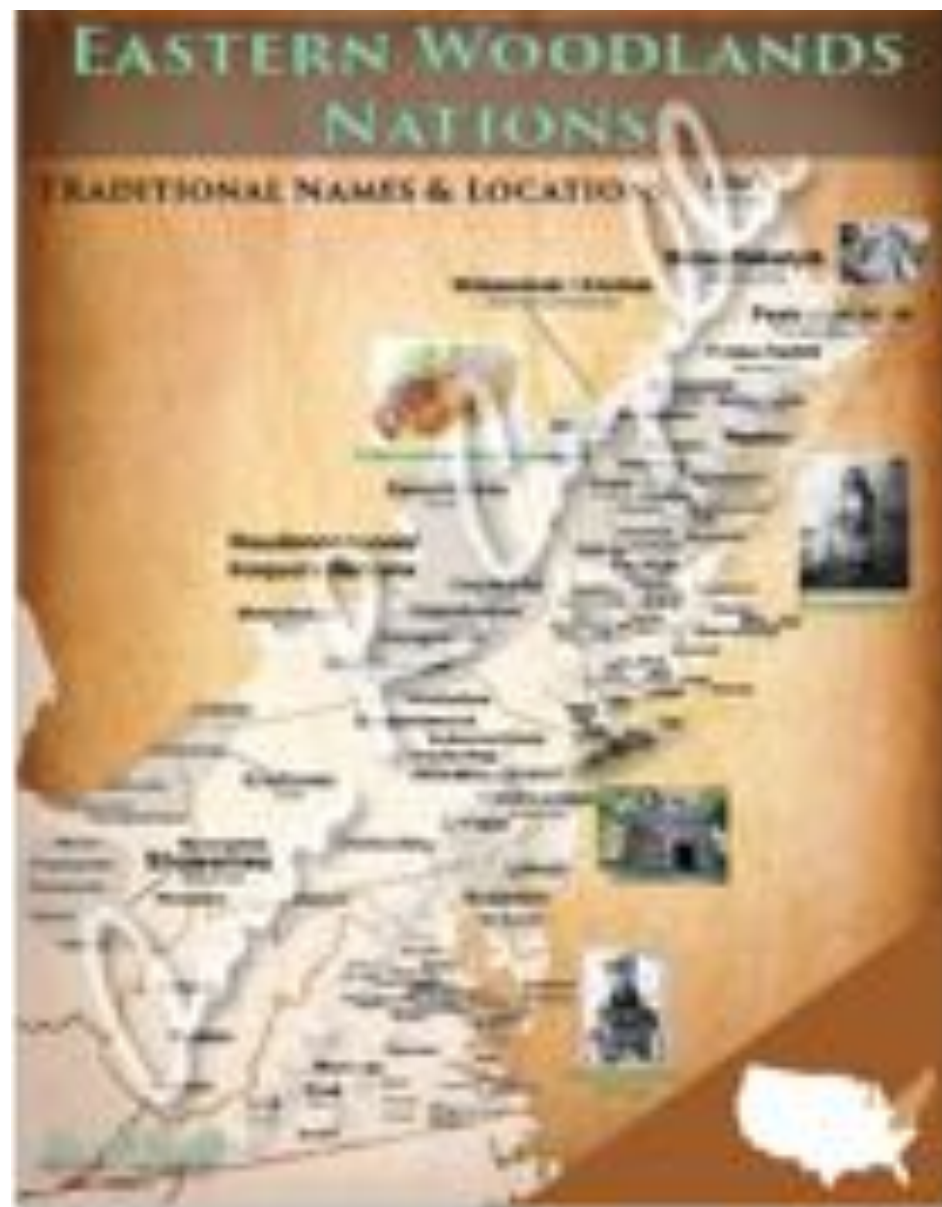
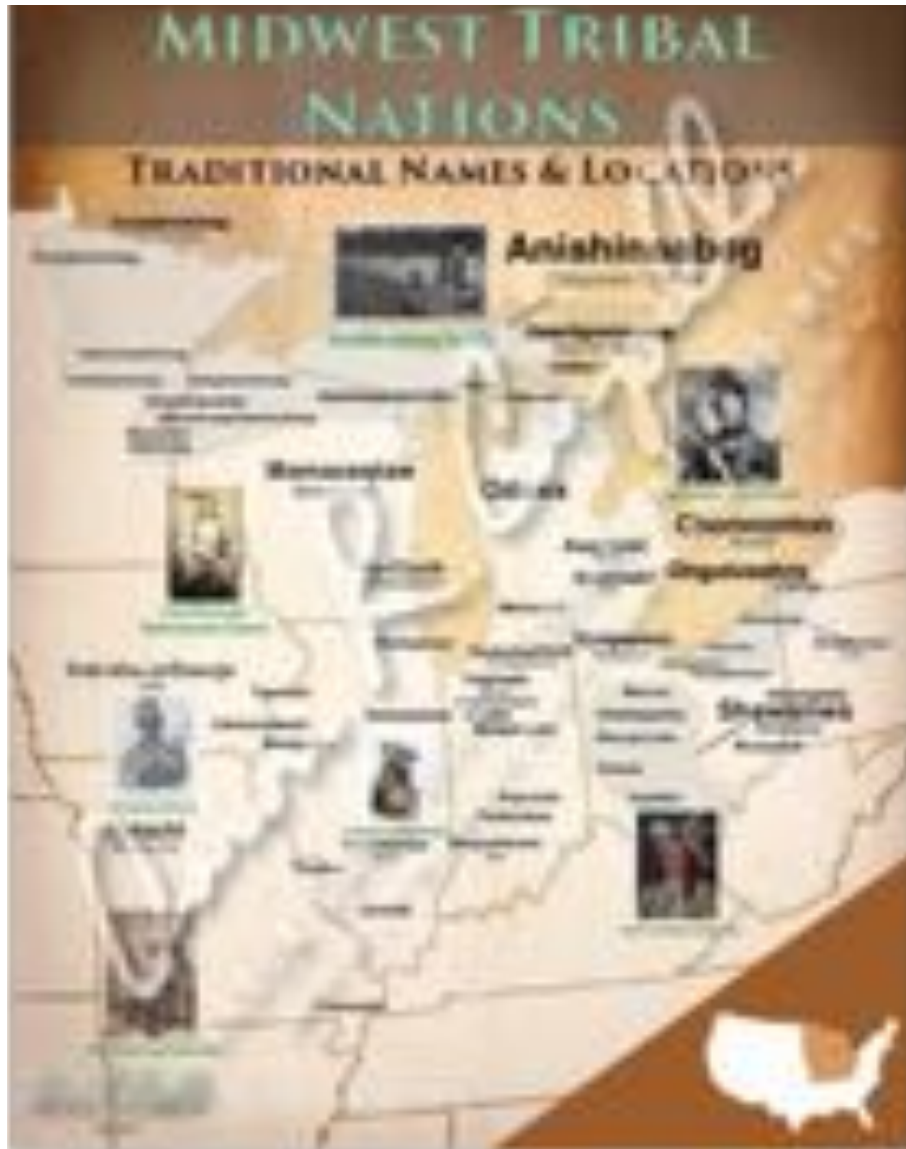
[The Common Pot: the Recovery of Native Space in the Northeast .](http://www3.amherst.edu/~lbrooks/map3.html)

by Lisa Brooks.

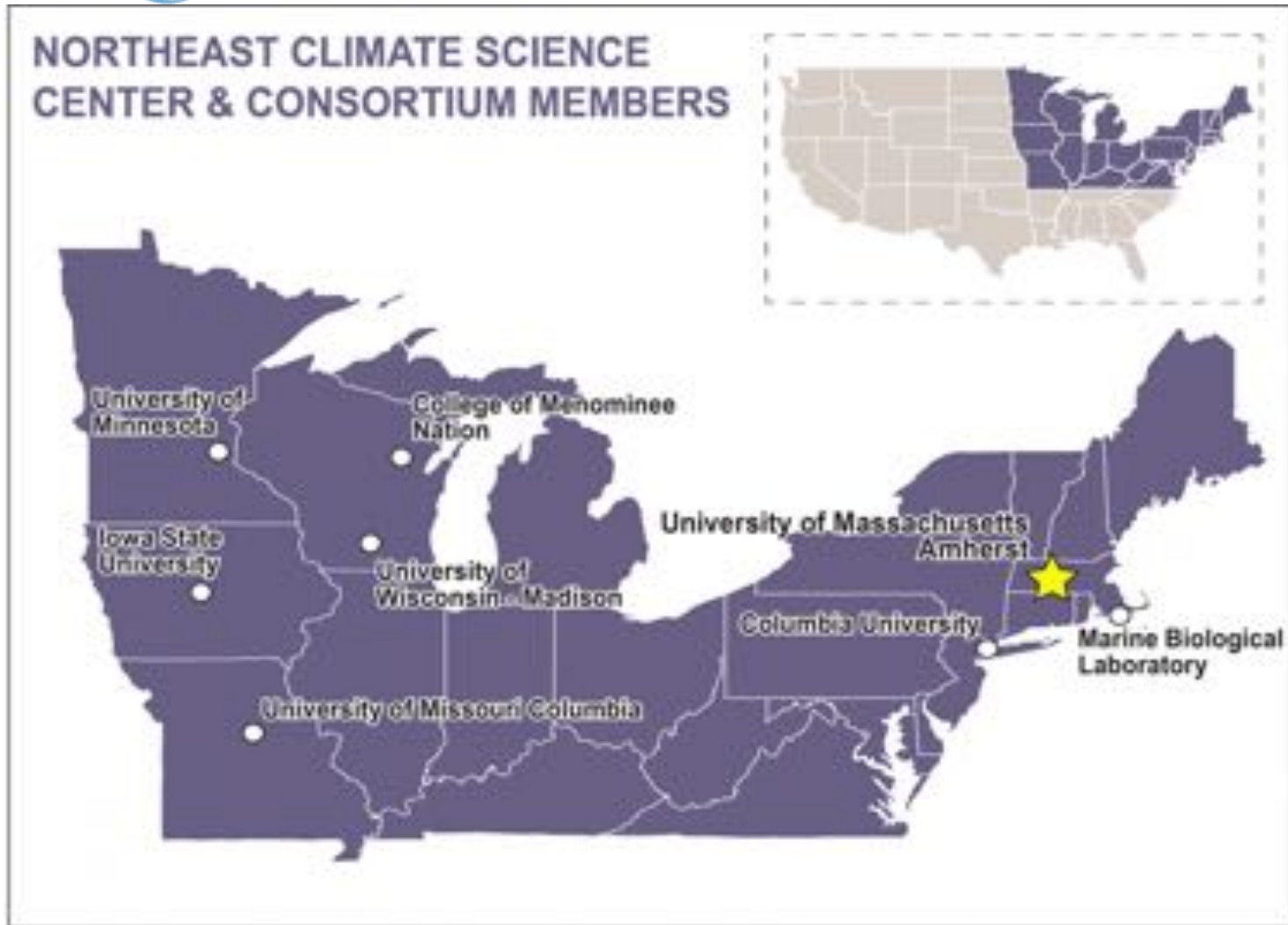
<http://www3.amherst.edu/~lbrooks/map3.html>

TRIBAL NATIONS MAPS

Aaron R. Coyolla



<http://www.tribalnationsmaps.com/>

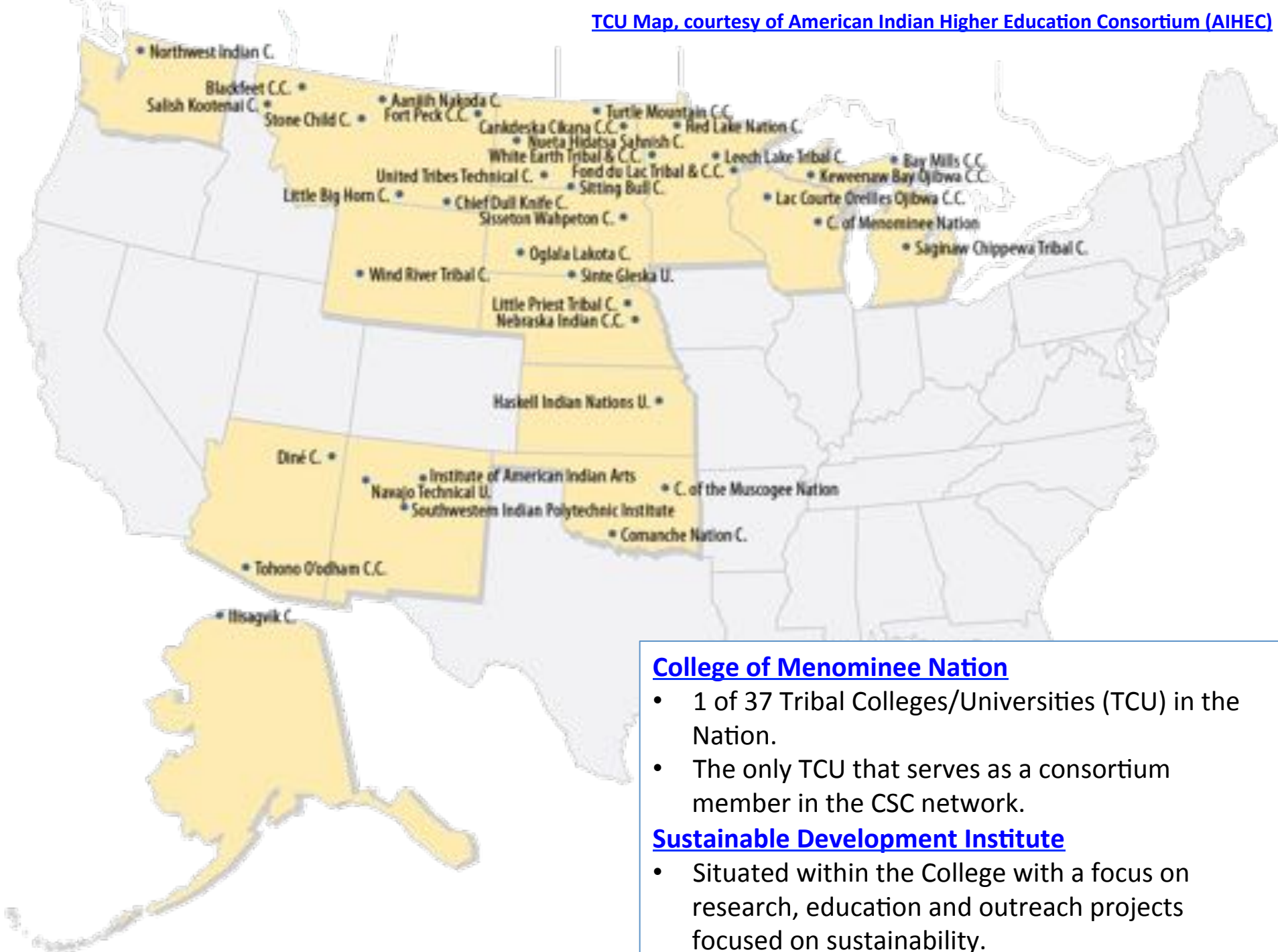


SDI HISTORY & THEORETICAL MODEL OF SUSTAINABILITY

- Theoretical Model:
 - Based on Menominee sustainable forestry story
 - 6 areas of community
 - “dimensions”
 - SD is the “process” of maintaining balance & reconciling tensions between dimensions
 - Central concept of “autochthony”
 - Intergenerational



<http://link.springer.com/article/10.1007/s11625-015-0304-x>



[College of Menominee Nation](#)

- 1 of 37 Tribal Colleges/Universities (TCU) in the Nation.
- The only TCU that serves as a consortium member in the CSC network.

[Sustainable Development Institute](#)

- Situated within the College with a focus on research, education and outreach projects focused on sustainability.

NE CSC Base Funded Projects

Collaboration in Action: Using the Menominee Model of Sustainability to Assess, Plan, and Build Capacity for Tribal Communities to Address Climate Change in the Northeast Climate Science Center Region

- Staudinger, M. D., T. L. Morelli, and A. M. Bryan. 2015. Integrating Climate Change into Northeast and Midwest State Wildlife Action Plans. DOI Northeast Climate Science Center Report, Amherst, Massachusetts. Contributing Author. Chapter 4: Scale-appropriate adaptation strategies and actions in the Northeast and Midwest United States. Tribes and tribal lands. P.40-42.
- Center, Northeast Climate Science Center. 2014. Northeast Climate Science Center Strategic Science Agenda 2013-2018. Contributing author. Science Theme 6: Impacts of climate variability and change on cultural resources.
- Pending release “[Northeast Indigenous Climate Resilience Network](#)” website.

Tribal Colleges and Universities: TCU Engagement with Tribal Communities on Climate Change Issues

- Coordinated with NE CSC, Bureau of Indian Affairs and Michigan State University to develop the SDI climate work as a case study for the U.S. Climate Resilience Toolkit.
- <http://toolkit.climate.gov/case-studies/college-menominee-nations-sustainable-development-institute-builds-capacity-tribal>
- BIA funded Menominee community climate change project, included resource support and information from NE CSC.

NE CSC Base Fund Leveraging

The NE CSC base funds received allows for partial support of other projects and leveraging opportunities to build on existing NE CSC and CSC network activities:

- 2014, 2015, 2016 Indigenous Planning Summer Institute.
<https://necsc.umass.edu/news/indigenous-planning-summer-institute>
- 2017 IPSI <http://indigenousplanningsummerinstitute.weebly.com/>
- 2016 Seminar On Global Indigeneity and Sustainability.
<https://www.eventbrite.com/e/cmnsdi-global-indigeneity-and-sustainability-registration-27387401455#>
- Hosting a new 3-year Tribal College and University (TCU) Americorps VISTA volunteer focused on tribal community engagement and climate change.
<http://sustainabledevelopmentinstitute.org/tribal-college-and-university-tcu-amicorps-vista-volunteer/>
- CMN SDI Climate Change Research intern participation in the Indigenous Geography Phenology Network led by Dan Wildcat (Haskell Indian Nations University) and Jeff Morisette (NC CSC). <https://www.usanpn.org/nn/indigenous-phenology-network>
- [BIA funded Midwest Tribal Climate Science Liaison](#)

NE CSC RFP Funded Projects

[Shifting Seasons: Building Tribal Capacity for Climate Change Adaptation Summit.](#)

- Hosted on the Menominee reservation October 2014.
- Partial funding provided by NE CSC.
- Target audience: Tribal managers and leaders,
- 153 total attendees representing:
 - 13 Different tribes
 - 4 CSC's (NE CSC, NC CSC, SC CSC, SE CSC)
 - Other federal and non-profit groups with climate decision support projects or activities.
- Final Summit Report is available.

[Supporting Collaborative Relationships between Tribes and Climate Science in the Northeast Region to Address Climate Impacts](#)

- A collaboration with Michigan State University.
- **Project scope:** facilitate a relationship between 6 Tribes from across the Northeast Region that will produce, for each participating Tribe, a set of future climate change scenarios.
- The scenarios can be used as the basis for motivating more extensive Tribal adaptation plans, justifying future Tribal adaptation/mitigation projects, and creating the foundation for more sophisticated collaborations between Tribes, other parties and the Northeast Climate Science Center.
- Worked with 3 different Tribes so far.

Climate Effects on the Culture and Ecology of Sugar Maple

- ACERnet (Acer Climate and Socio-Ecological Research Network)

Toni Lyn Morelli, Kristina Stinson, Joshua Rapp (University of Massachusetts Amherst); Ryan Huish (University of Virginia College at Wise); David Lutz (Dartmouth University); Selena Ahmed (Montana State University); Boris Dufour (Université du Québec à Chicoutimi); Autumn Brunelle (Red Lake Nation)

- Sugar maple is an important resource for many Northeast Tribes
- Our project seeks to understand climate effects on the maple resource and maple syrup producers, including tribal nations
- Tribal interactions include:
 - Informal advising (CMNSDI, Intertribal Agriculture Council)
 - Letters of support (Native American Programs at the University of Maine, Harvest Education Learning Project (HELP) for the Lac Courte Oreilles Ojibwe Tribe)
 - Discussions at a project workshop (Great Lakes Indian Fish and Wildlife Commission, CMNSDI, Menominee Tribal Enterprises, Pokagon Band of Potawatomi Indians, Little Traverse Bay Band, Mashantucket Pequot)
 - Focus group with Tribal maple producers at Great Lakes Intertribal Food Summit at Red Lake (September 2016) conducted by project partner Autumn Brunelle, member of Red Lake Nation

Preparing Tribal Nations for Climate Change

Alex Bryan, NE CSC/USGS Postdoctoral Fellow has met with several tribes:

- Building relationships & trust
- Hearing concerns & priorities
- Presenting information to be used in adaptation planning
- Reviewing adaptation plans

Tribes:

- Little Traverse Bay Bands of Odawa Indians (MI)
- Grand Traverse Band (MI)
- Nottawaseppi Huron Band of the Potawatomi (MI)
- Forest County Potawatomi (WI)
- Sault Ste. Marie Tribe of Chippewa Indians (MI)
- Menominee Indian Tribe of Wisconsin (WI)

Workshops:

- ITEP training (serving several tribes from MN to NY)
- Great Lakes Adaptation Forum (serving tribes across GL region)
- USET workshop on western-indigenous knowledge exchange (serving Northeastern tribes)



Panel Q&A with Audience: The presenters will field questions from the audience to engage in a dialogue on how the NE CSC has worked with Tribes previously,

1) what would we (Tribes and NE CSC) do differently in terms of addressing climate resiliency projects of mutual interest?

2) and what are topics or research initiatives do you see as most needed by Tribes in the northeast region.